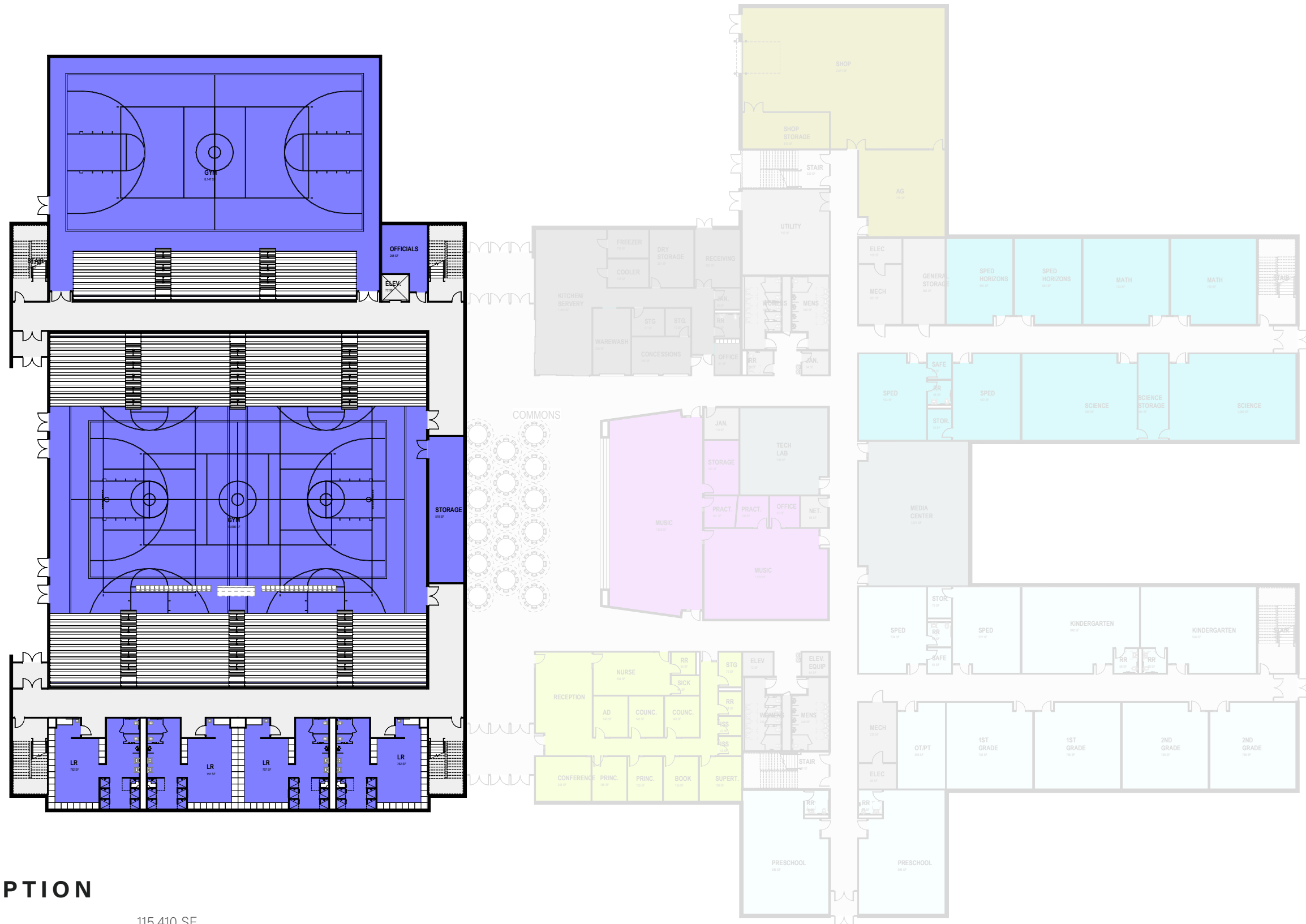


LOWER LEVEL



TOP LOAD GYM OPTION

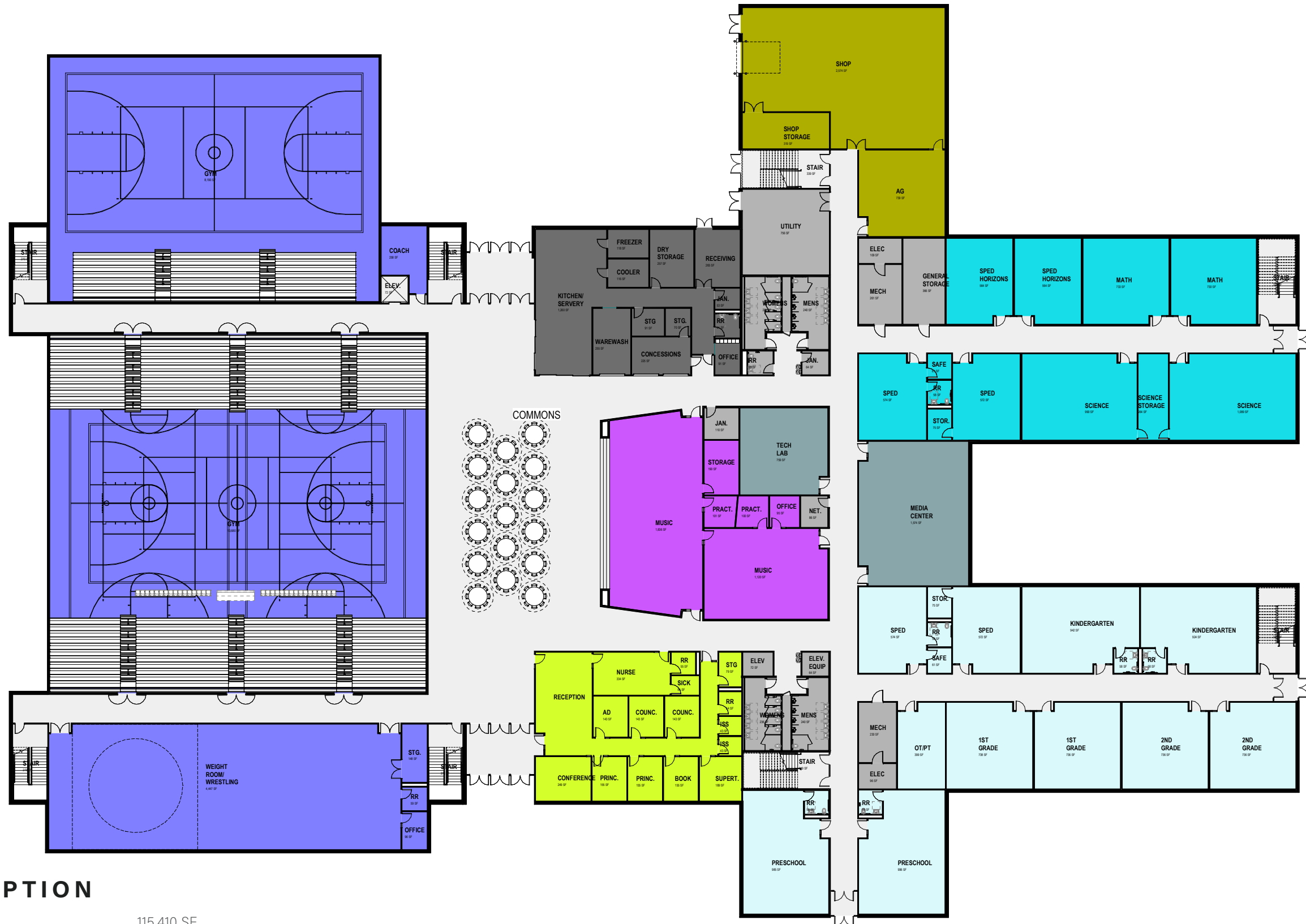
K-12 + Main Gym (does not include aux gym) 115,410 SF
 Auxiliary Gym 8,530 SF

Full Build 123,940 SF

Johnson County Central Public School
 March 16, 2023

- Food Service
- Building Support
- Circulation
- Athletics
- Administration
- High School Classrooms
- SPED
- Elementary Classrooms
- Performing Arts
- AG/IT/Art

FIRST FLOOR



TOP LOAD GYM OPTION

K-12 + Main Gym (does not include aux gym) 115,410 SF
 Auxiliary Gym 8,530 SF

Full Build 123,940 SF

Johnson County Central Public School
 March 16, 2023

CLARK & ENERSEN

- Food Service
- High School Classrooms
- Building Support
- SPED
- Circulation
- Elementary Classrooms
- Athletics
- Performing Arts
- Administration
- AG/IT/Art

SECOND FLOOR



TOP LOAD GYM OPTION

K-12 + Main Gym (does not include aux gym) 115,410 SF
 Auxiliary Gym 8,530 SF

Full Build 123,940 SF

Johnson County Central Public School
 March 16, 2023

- Food Service
- High School Classrooms
- Building Support
- SPED
- Circulation
- Elementary Classrooms
- Athletics
- Performing Arts
- Administration
- AG/IT/Art